



**INCLUDED ELEVATION 1 - FARMHOUSE**



**OPTIONAL ELEVATION 2 - CRAFTMANS**



**OPTIONAL ELEVATION 3 - TRADITIONAL**

**FLOOR PLAN INCLUDES:**

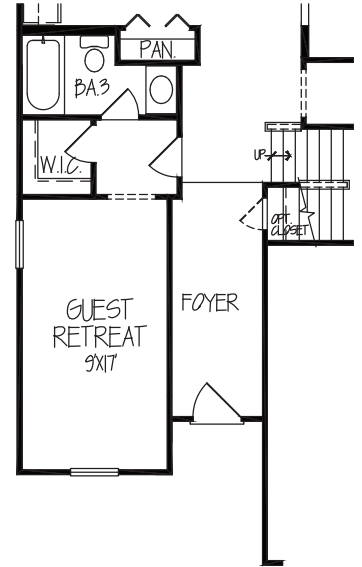
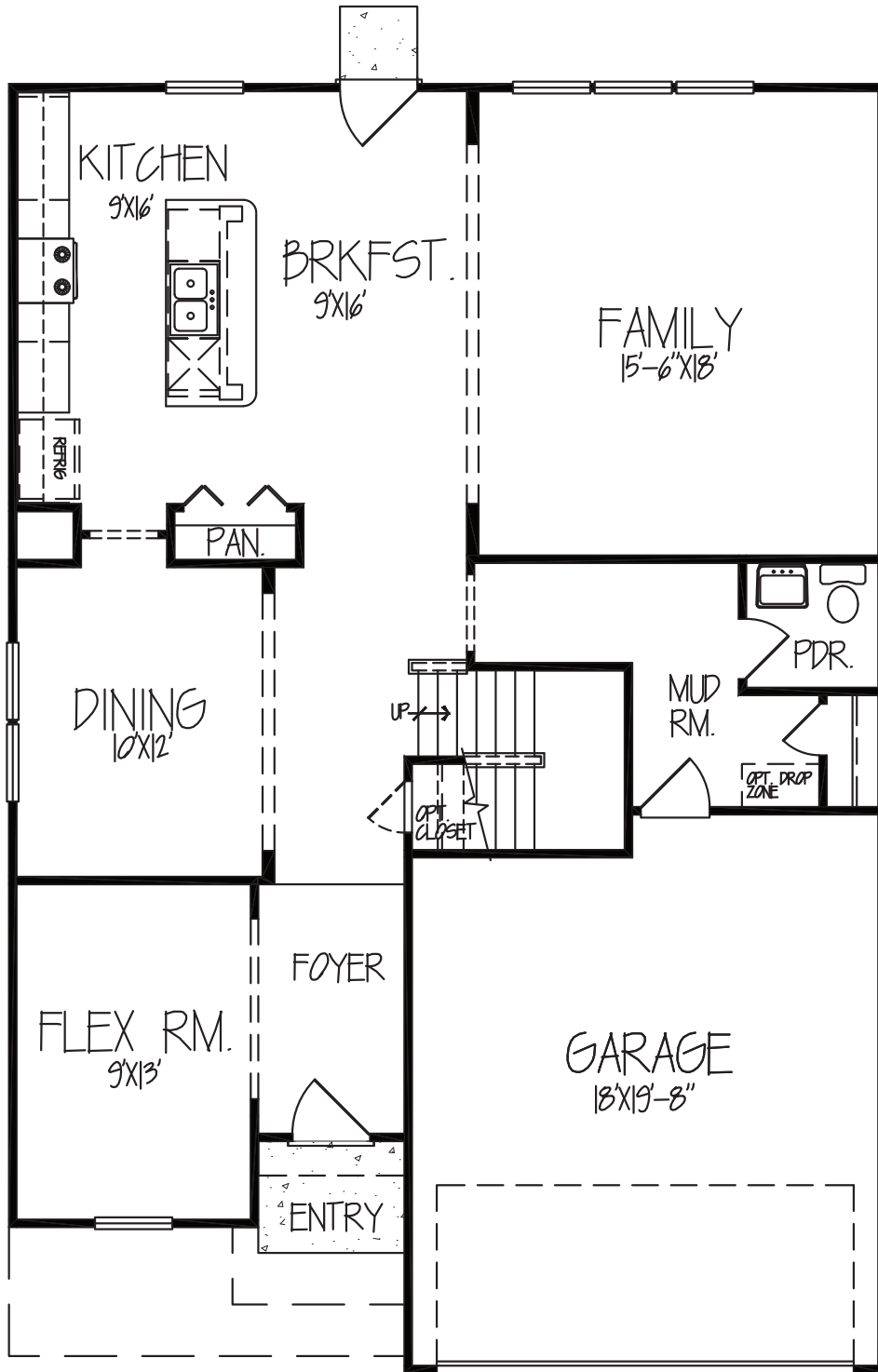
**4 OR 5 BEDROOMS | 2.5 OR 3.5 BATHROOMS | 2,761 SQUARE FEET**

- 2-Car Garage
- Flex Room
- Dining Room
- Breakfast Room
- Family Foyer
- Game Room
- Second Floor Laundry
- Master Suite
- Walk-in Closets

[WWW.PYATTBUILDERS.COM](http://WWW.PYATTBUILDERS.COM)



# 2761 | MAIN LEVEL FLOOR PLAN



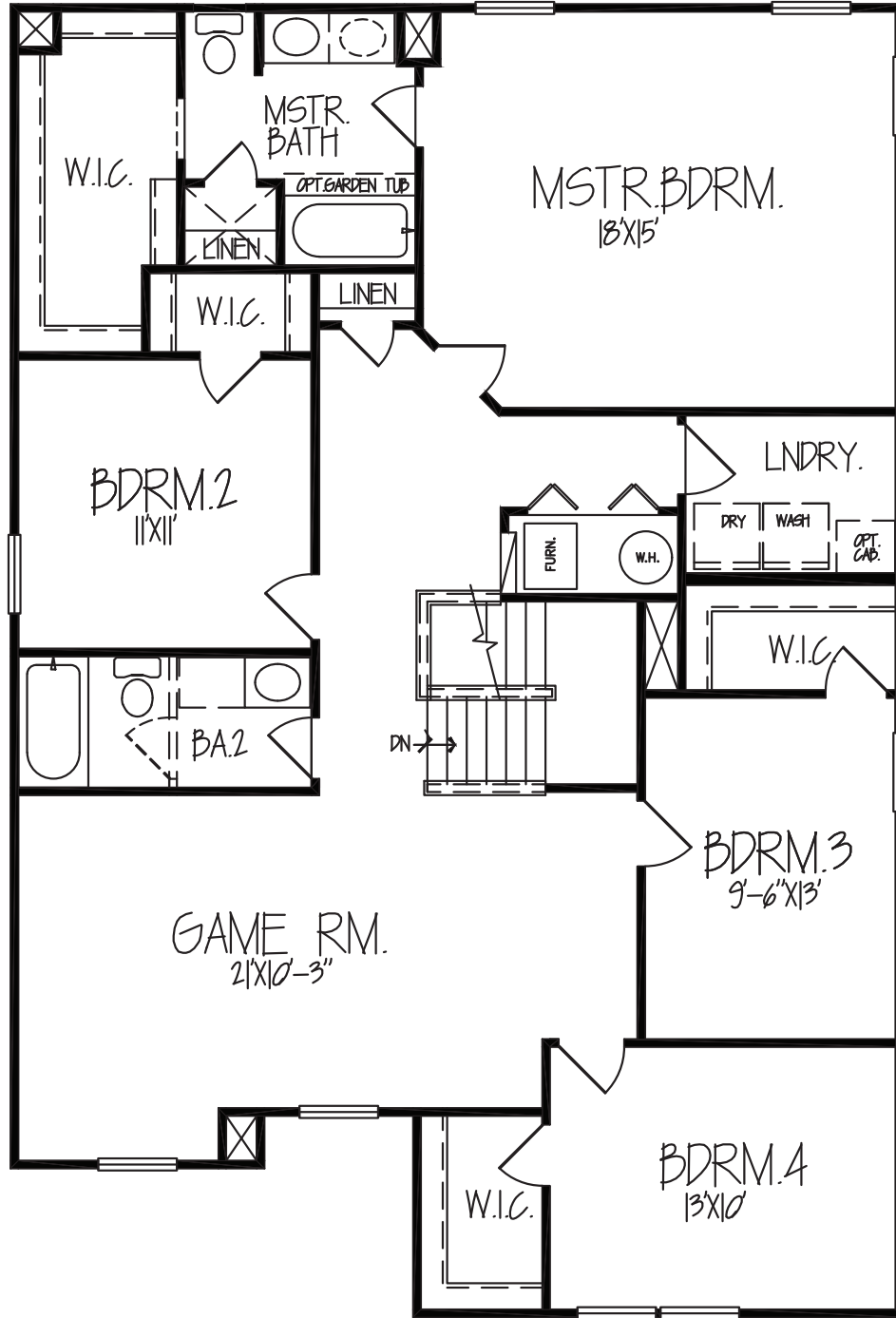
OPTIONAL GUEST RETREAT

[WWW.PYATTBUILDERS.COM](http://WWW.PYATTBUILDERS.COM)



Pyatt Builders, LLC reserves the right to make changes without notice or obligation. Please note, drawings shown may not be to scale. Windows, garage doors, porch size/style, dormers, included masonry, general elevation, roof pitch & included features will vary by community and may be optional. Please ask Sales Manager for additional information. Elevations shown above may not be the included elevation.

# 2761 | SECOND LEVEL FLOOR PLAN W/ 4 BEDROOM + LOFT

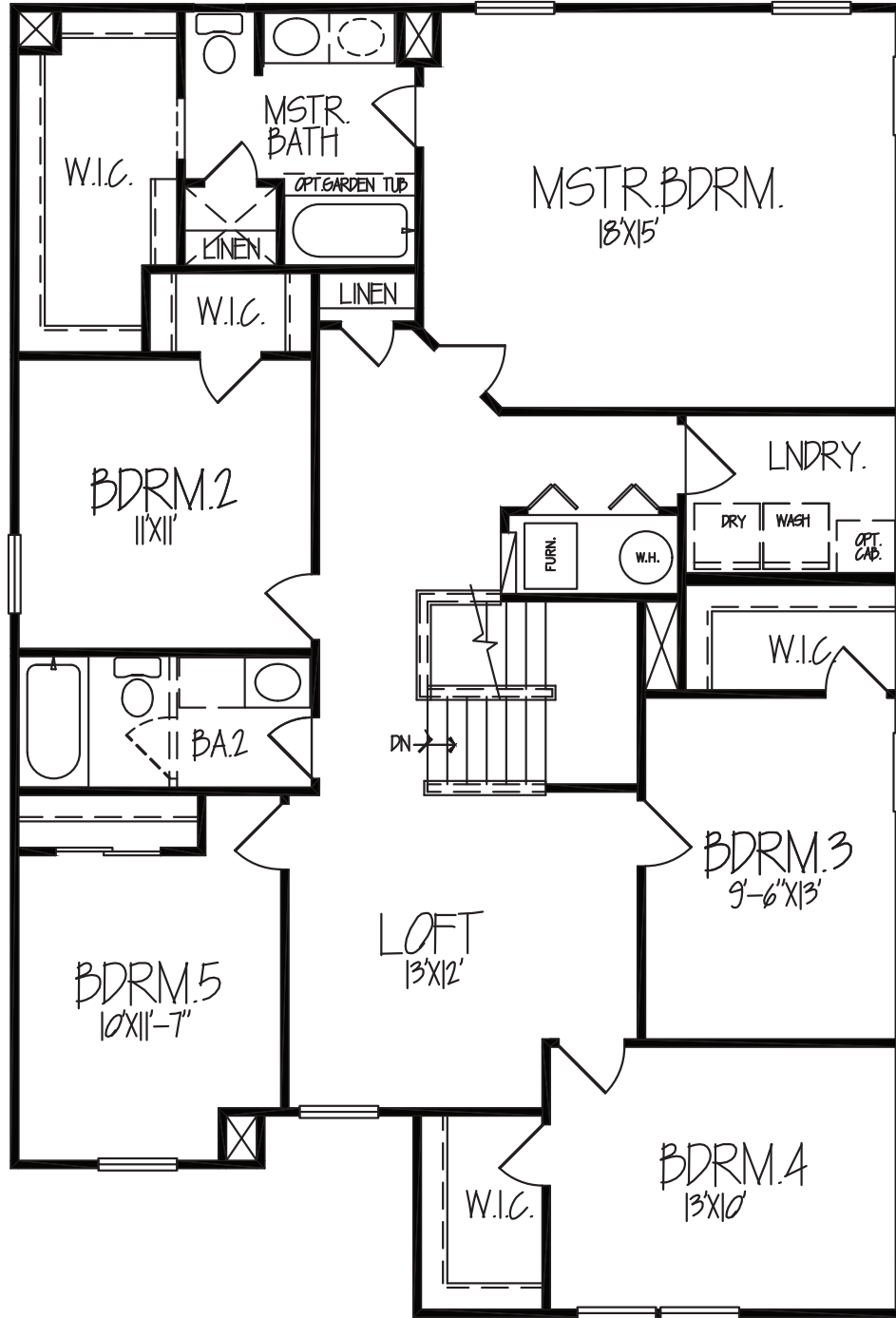


[WWW.PYATTBUILDERS.COM](http://WWW.PYATTBUILDERS.COM)



Pyatt Builders, LLC reserves the right to make changes without notice or obligation. Please note, drawings shown may not be to scale. Windows, garage doors, porch size/style, dormers, included masonry, general elevation, roof pitch & included features will vary by community and may be optional. Please ask Sales Manager for additional information. Elevations shown above may not be the included elevation.

# 2761 | OPTIONAL SECOND LEVEL FLOOR PLAN W/ 5 BEDROOM + LOFT



[WWW.PYATTBUILDERS.COM](http://WWW.PYATTBUILDERS.COM)



Pyatt Builders, LLC reserves the right to make changes without notice or obligation. Please note, drawings shown may not be to scale. Windows, garage doors, porch size/style, dormers, included masonry, general elevation, roof pitch & included features will vary by community and may be optional. Please ask Sales Manager for additional information. Elevations shown above may not be the included elevation.